



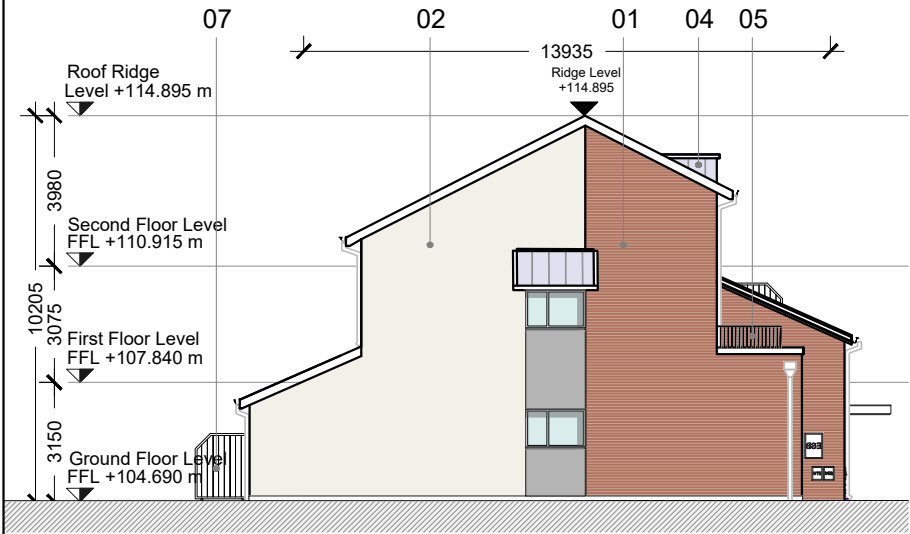
Duplex Type H2_Front elevation

Scale 1:200 @ A3



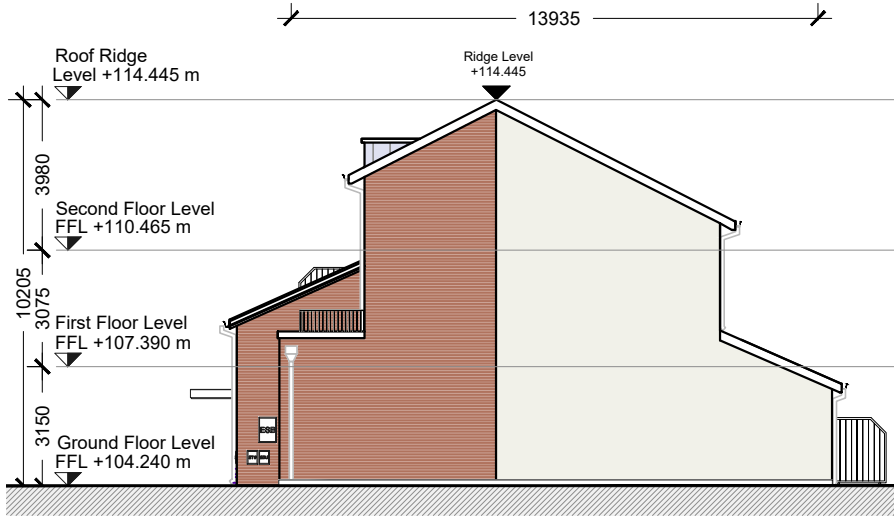
Duplex Type H2_Rear elevation

Scale 1:200 @ A3



Duplex Type H2_Side elevation

Scale 1:200 @ A3



Duplex Type H2_Side elevation

Scale 1:200 @ A3

Material legend

1. Selected brick finish
2. Selected render finish
3. Spandrel cladding to selected colour
4. Selected zinc roof
5. Steel handrail
6. Double glazed windows/ doors/ screens to selected colour
7. Louvred privacy screen

GENERAL NOTES			
1. COPYRIGHT RESERVED			
2. DO NOT SCALE DRAWING. USE FIGURED DIMENSIONS ONLY.			
3. ALL DISCREPANCIES TO BE REPORTED TO ARCHITECT.			
4. THE CONTRACTOR IS RESPONSIBLE FOR CHECKING ALL LEVELS AND DIMENSIONS.			
5. ALL STRUCTURE TO BE TO STRUCTURAL ENGINEERS DETAILS.			
6. ALL MECH & ELEC SERVICES TO SERVICES ENGINEERS DETAILS.			
7. ALL PROPRIETARY ITEMS TO BE INSTALLED IN ACCORDANCE WITH MANUFACTURERS INSTRUCTIONS.			
8. CONTRACTOR IS RESPONSIBLE FOR THE COORDINATION OF STRUCTURE FINISHES AND SERVICES.			
REV	DATE	DESCRIPTION	BY

Type H2 (Duplex)

H2-GF Unit (2 bed)	
Upper Ground Floor	77.4 sqm
Total	77.4 sqm

H2-Upper Unit (2 bed)	
First Floor	51.4 sqm
Second Floor	44.0 sqm
Total	95.4 sqm



JOHN FLEMING
ARCHITECTS
The Tree House
17 Richview Office Park, DUBLIN 14.
T: (01) 6689888 E: info@jfa.ie W: www.jfa.ie

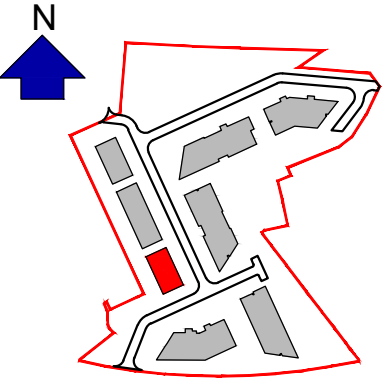
CLIENT
Ardstone Homes Ltd.

PROJECT
White Pines East SHD
Stocking Ave
DRAWING
Duplex Unit H2
Elevations

SCALE	JOB NO.
1:200@A3	1941
DRAWN BY	EH
DATE	March 2021
DRAWING NUMBER	REVISION
WPE-JFA-00-H2-DR-A-P4007	-

DRAWING LOCATION
w:\19 jobs\1941\03-planning\3.1 planning applications\3.1.2 wpe\duplex

DRAWING STATUS
Planning



Keyplan

key plan

Scale 1:5000

